

# SPEC SHEET + MEASUREMENTS

**CornerStone**

CornerStone® Soft Shell Shirt Jacket. CSJ73

## Product photo



Built to layer over hoodies or tees, this tough, water-resistant shirt jac delivers a clean look both on and offsite.

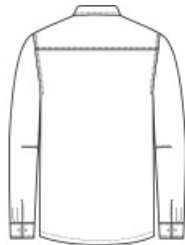
- 100% polyester with water-resistant finish
- 100% polyester fleece lining
- Fabric waterproof rating: 1000MM
- Fabric breathability rating: 1000G/M<sup>2</sup>
- Triple-needle stitching
- Full snap closure
- Two chest pockets with flaps and snap closures
- Reinforced open front pockets
- Adjustable snap cuffs
- Side vents

**Care Instructions** Machine Wash Cold. Only Non-Chlorine Bleach, When Needed. Do Not Use Fabric Softener. Tumble Dry Low. Cool Iron, If Necessary. Do Not Dry Clean.

## Sketches



front



back

# SPEC SHEET + MEASUREMENTS



CornerStone® Soft Shell Shirt Jacket. CSJ73

## PRODUCT MEASUREMENTS

	XS	S	M	L	XL	2XL	3XL	4XL
Body Length at Back	29 1/2	30 1/2	31 1/2	32 1/2	33 1/2	34 1/2	35	35 1/2
Chest	20 1/2	22	23 1/2	25	26 1/2	28	30	32
Sleeve Length from Center Back	34 5/8	35 1/4	35 7/8	36 1/2	37 1/8	37 3/4	38 1/2	39 1/4

**Body Length at Back:** Measured from high point shoulder to finished hem at back.

**Chest:** Measured across the chest one inch below armhole when laid flat.

**Sleeve Length from Center Back:** Measure from Center Back neck to shoulder point to sleeve hem.

## SIZE CHARTS

	XS	S	M	L	XL	2XL	3XL	4XL
Chest	32-34	35-37	38-40	41-43	44-46	47-49	50-53	54-57

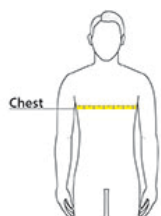
# SPEC SHEET + MEASUREMENTS



CornerStone® Soft Shell Shirt Jacket. CSJ73

## HOW TO MEASURE

---



### CHEST

Measure under the arm and around the fullest part of the chest with arms down, keeping tape horizontal.

## COLORS

---



Black  
PMS BLACK  
C



Navy  
PMS 533C